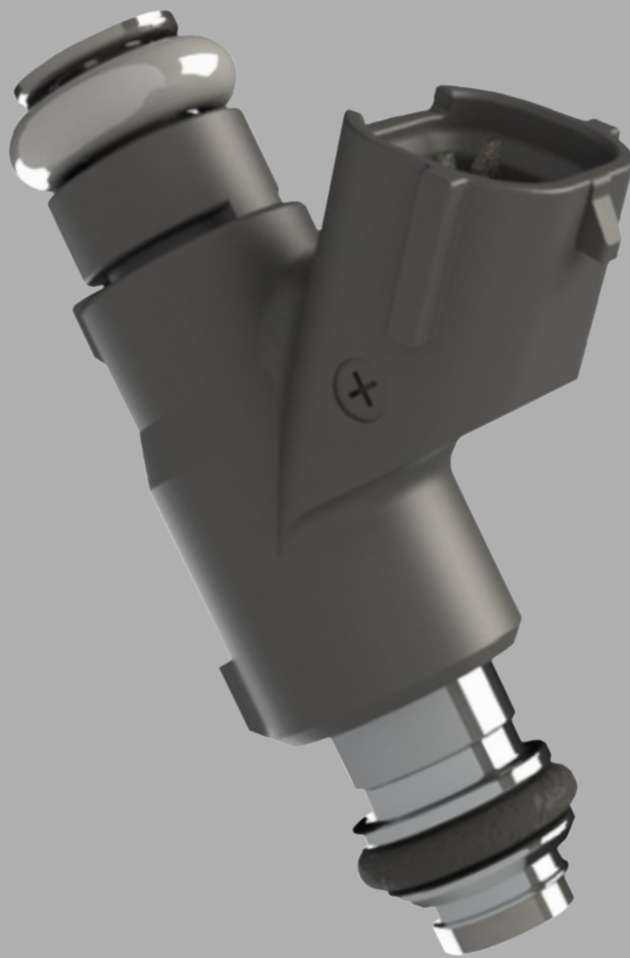


**Delphi**

Explore our technologies

# COMPRESSED NATURAL GAS INJECTOR MULTEC<sup>®</sup>3.5 CNG PFI

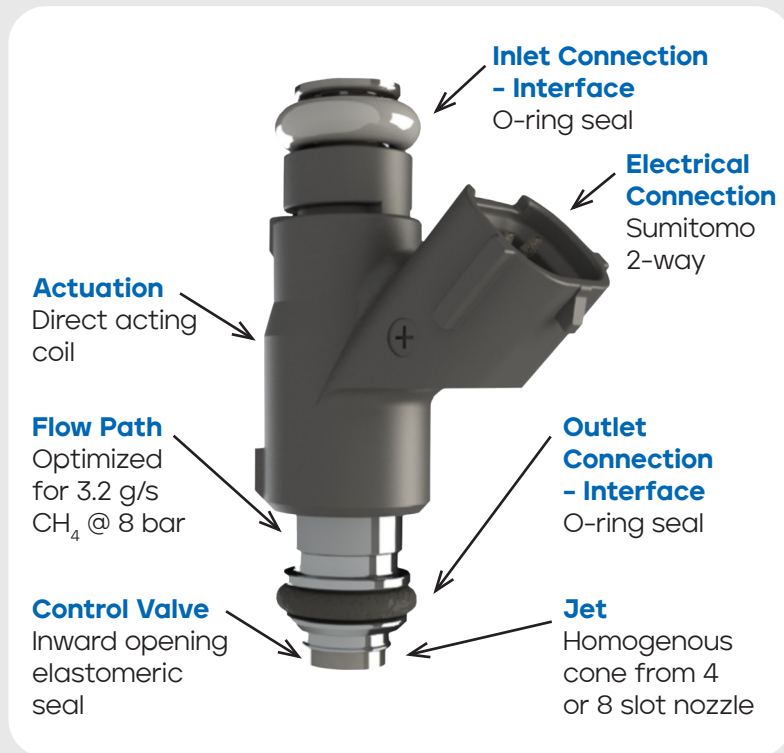
For Passengers Cars and Light Duty Commercial Vehicles



Explore our technologies

# COMPRESSED NATURAL GAS INJECTOR MULTEC<sup>®</sup>3.5 CNG PFI

ECU controlled low pressure fuel injector for CNG fueled internal combustion engines



## Features

- Compact injector design with high impedance coil
- Compatible with standard PFI injector packaging

## Design Features

- Direct acting single coil solenoid
- Inward opening control valve
- Elastomer valve seal for good sealing performance and low noise
- Optimized internal flow path for high mass flow in compact package

## Performance

- Nominal pressure range: 2 to 9 bar gauge
- Static flow range: up to 3.2 g/s CH<sub>4</sub> at 8 bar gauge
- Low flow design available: 0.9 g/s CH<sub>4</sub> at 2 bar gauge
- Compatible with low-cost saturated switch or peak and hold drivers
- Validated to 400M cycles in CNG at 9 bar gauge

## Benefits

- Compatible with CNG and propane
- Injectors can be used with conventional PFI fuel rail designs
- Injector is easily adapted to existing powertrains (e.g. bi-fuel CNG + gasoline, small engines and aftermarket conversions)
- Injector is certified to European ECE R110 performance and safety standards
- Compatible with standard OBD strategies

FEATURE	MULTEC <sup>®</sup> 3.5 CNG
Static Flow Options (g/s CH <sub>4</sub> )	0.9 (2 bar), 2.4 (8 bar), 3.2 (8 bar)
Operating Pressure (bar gauge)	Up to 9
Maximum OD (mm)	17.0 (solenoid diameter)
Tip Diameter (mm)	8.0
Solenoid Resistance (ohms)	7.6
Electrical Connector	Sumitomo PN 6189-0785